

TB OEM - TB KIT SERIES

Refrigeration Thermostats

User Manual



TB KIT SERIE

Includes trim & button according scale

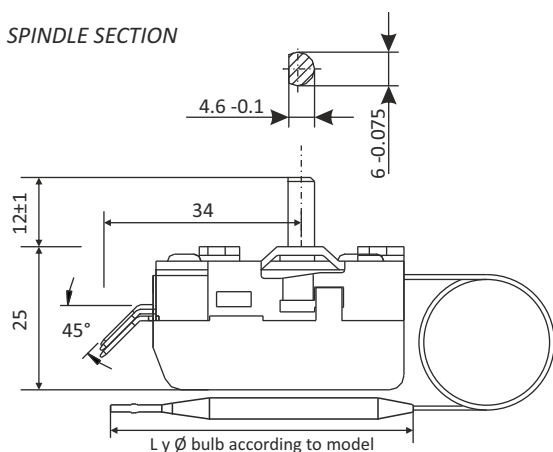


TECHNICAL CHARACTERISTICS

- Connection difference approx. $2^{\circ}\text{C} \pm 1^{\circ}\text{C}$
- Maximum body temperature 150°C
- Manoeuvrability $16\text{A}/400\text{V}^{\sim}$
- Temperatures are measured by introducing the bulb and 80/100mm of capillary into the bath at an ambient temperature of $23 \pm 3^{\circ}\text{C}$
- The indicated temperatures are cut-off values **P-1**
- Axis drawn in "0" position
- Faston 6.3X0.8 DIN 46244

TB OEM SERIE

SPINDLE SECTION



GUARANTEE CONDITIONS

This device has a 3-year warranty, which is limited to the replacement of the defective part.

Shipping is not included. We do not accept any responsibility for damaged equipment resulting from improper handling.

It is not included in the guarantee:

- Devices whose serial number has been damaged, erased or modified.
- Devices whose connection or use has not been carried out in accordance with the instructions enclosed with the device.
- Devices modified without prior agreement with the manufacturer.
- Devices whose deterioration is due to shocks or liquid or gaseous emissions.
- For the rest of general conditions visit our web.

VERY IMPORTANT

It is the installer's responsibility to incorporate the appropriate electrical protection to the installation (APPROVED).

Device designed for a clean contamination situation.

Independent mounting control device for surface mounting, for connection to fixed ductwork.

Subject to change without notice.

Sonder Regulación, S.A.

Avda. La Llana, 93

08191 RUBÍ

(Barcelona) Spain

www.sonder.es



Cod.: 9106 INGV1ABR20

TB OEM - TB KIT SERIES

Refrigeration Thermostats

User Manual



APPLICATIONS

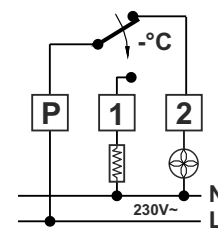
- Applications: air conditioners, air conditioning ducts, heaters, boilers, thermos, hot cupboards, heaters, stoves, fryers, kitchen ovens, laboratory equipment, etc
- TB KIT version available (individually bagged with button and trim)
- Standards: CE and UL
- Operation by liquid expansion, for wide scales. Low temperature influence in the housing with respect to the sensor bulb.

MOD.	Code OEM	/	KIT	SCALE	DIF.	CAPILLARY	BULB
TB 04	23.023		23.061	0 to 40°C	2°C	850 mm	Ø6X132 inox
TB 04-2	23.052		23.062	0 to 40°C	2°C	2.000 mm	Ø6X127 inox
TB 09	23.024		23.063	30 to 90°C	3°C	1.500 mm	Ø6X125 inox
TB 09-2	23.048		23.064	30 to 90°C	3°C	2.000 mm	Ø6X115 inox
TB 09-2-1	23.053		23.065	-10 to 90°C	3°C	2.000 mm	Ø6X101 inox
TB 12	23.025		23.066	30 to 120°C	4°C	850 mm	Ø6X100 inox
TB 12-2	23.049		23.067	30 to 120°C	4°C	2.000 mm	Ø6X100 inox
TB 20	23.026		23.068	50 to 200°C	5°C	1.000 mm	Ø6X83 inox
TB 20-2	23.050		23.069	50 to 200°C	5°C	2.000 mm	Ø6X83 inox
TB 32	23.027		23.070	50 to 320°C	6°C	850 mm	Ø3X162 inox
TB 32-2	23.051		23.071	50 to 320°C	6°C	2.000 mm	Ø3X162 inox
TB 32-2-1	23.054		23.072	50 to 320°C	6°C	2.000 mm	Ø6X53 inox

NOTE: In the case of appliances without a box, the metal parts must be insulated in accordance with the standard.

Electrical diagrams

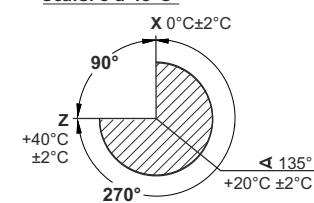
Off position



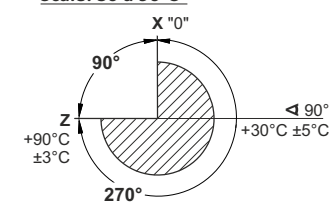
Power-free relay contacts

Temperature diagrams according to regulation scales

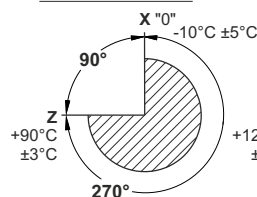
Scale: 0 a 40°C



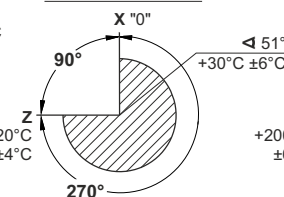
Scale: 30 a 90°C



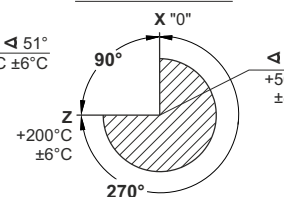
Scale: -10 a 90°C



Scale: 30 a 120°C



Scale: 50 a 200°C



Scale: 50 a 320°C

