

Instructions Sheet



AlertSON can function as a visual beacon directly connected to power.

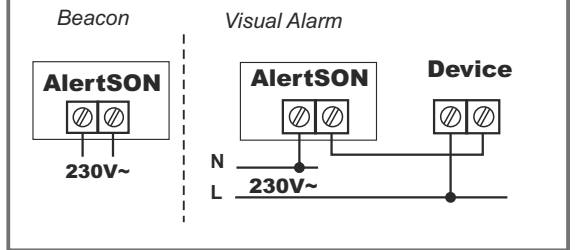
You can also connect to a contact closure device and function as a visual alarm.

To function needs to be fed at 230V ~.

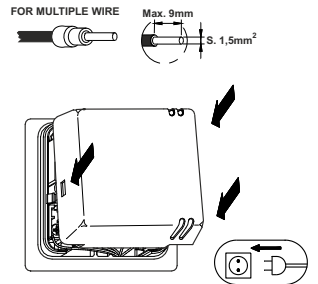
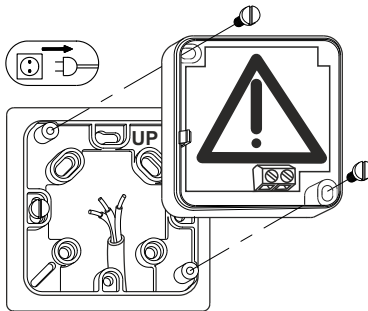
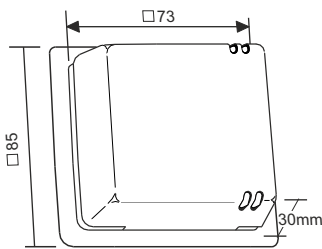
TECHNICAL CHARACTERISTICS

Power Supply	230V~	+10%	-15%	50/60Hz.
Working Temperature	-5 a / to 45°C.			
Storage Temperature	Máx. 50°C.			
Device Protection	IP20.			

OPERATING EXAMPLE



MEASURES AND INSTALLATION



GUARANTEE CONDITIONS

This appliance has a three-years guarantee limited to replacement of defective parts. Ports not included.

We will not accept any responsibility for damage caused to the appliance by poor handling.

The guarantee does not include:

- Appliances with a damaged, effaced or altered series number.
- Appliances which have not been connected or used following the instructions that accompany it.
- Appliances which have been altered without the prior consent of the manufacturer.
- Appliances damaged by blows of liquid spills or gaseous emissions.

VERY IMPORTANT

It is installer's responsibility to fit electrical protection suitable for the installation (**STANDARDIZED**).

This appliance should be mounted on a universal recessed box.

Device designed for use in non-polluted environments.

Independently mounted control device for surface mounting.

We reserve the right to make modifications without prior notice.

Sonder Regulación, S.A.

Avda. La Llana, 93

08191 RUBÍ

(Barcelona), Spain

www.sonder.es

