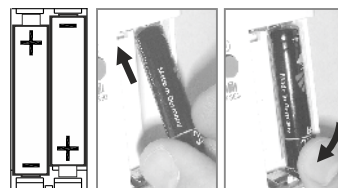


Batteries replacement



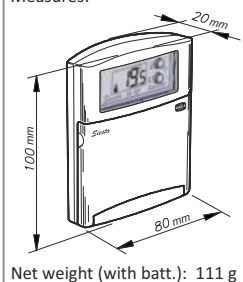
Low battery message. Open the cover and insert two alkaline batteries, type LR03 AAA 1.5V, respecting the polarity marked on the device and always inserting them as shown in the diagram opposite. With batteries with a high charge, the display may show a shading, which will disappear after a few weeks.

Very Important: Don't use rechargeables batteries

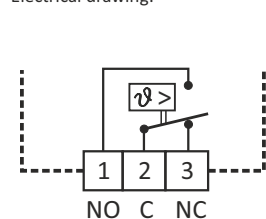


Technical data

Measures:



Electrical drawing:



Regulation scale:..... from 5 to 35°C
Ambient temperature:..... Tmin. 0°C, Tmax. 40°C
Storage temperature:..... maximum 50°C
Power supply:..... 2 alkaline battery 1,5V LR03 (AAA)
Low battery indicator:..... "bat"
Battery duration:..... 2 years, aprox
Breakage power (contacts):..... 8(3)A 250Vac
Maximum cable size to connect:..... 1,5mm²
Cable type:..... H-05V-K
Dregree of protection:..... IP20
Action Type According EN 60730:..... 1.B
Homologated:..... CE

Guarantee conditions

This appliance has a three-years guarantee limited to replacement of defective parts. Transport not included.

We will not accept any responsibility for damage caused to the appliance by poor handling.

The guarantee does not include:

- Appliances with a damaged, effaced or altered series number.
- Appliances which have not been connected or used following the instructions that accompany it.
- Appliances which have been altered without the prior consent of the manufacturer.
- Appliances damaged by blows or liquid spills or gaseous emissions.

VERY IMPORTANT:

This appliance should be mounted on a universal embedded box.

Device designed for a clean pollution situation.

This control is not a safety device and should not be used as such, is the responsibility to incorporate appropriate protection for each type of facility (homologated) installer.

Independent control device mounting, and connection via fixed pipeline.

We reserve the right of modify without prior notice.

Sonder Regulación, S.A.

Avda. La Llana, 93

08191 RUBÍ

(Barcelona) Spain

www.sonder.es

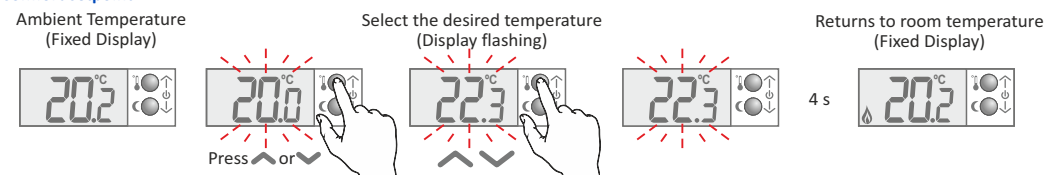


Cod.: 7462 INGV1 JUL21

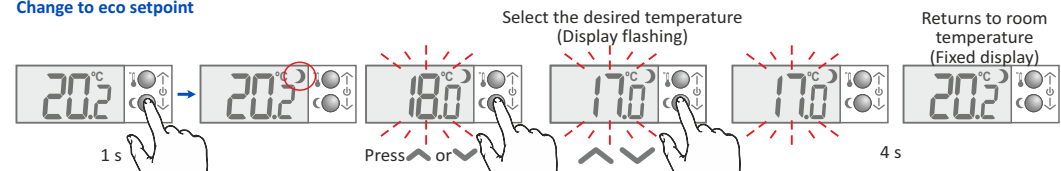
This is a battery-operated digital thermostat. Relay operation can be configured as all/nothing or in saving mode (chronoproportional) to optimise the energy demanded from the boiler to reach the setpoint temperature and save energy.

Change of desired temperature (Double setting, comfort setpoint / eco setpoint)

Comfort setpoint



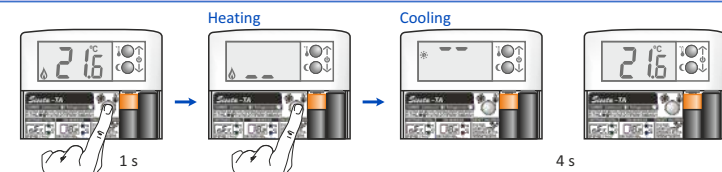
Change to eco setpoint



Regulation in Heating mode (by factory) / Cooling (❄)

Pressing the key once displays the current regulation mode. Pressing it again changes the mode.

It is recommended that in cooling mode the differential should be higher to protect the the engine.

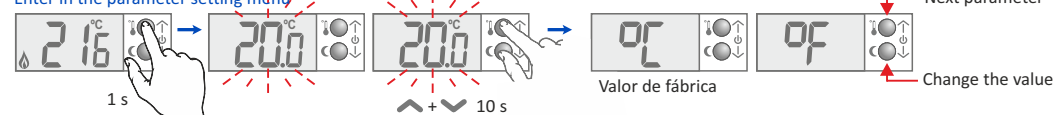


Regulation ON / OFF (maintains the anti-frost)



Parameters

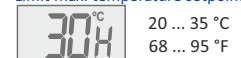
Enter in the parameter setting menu



Temperature units



Limit max. temperature setpoint



Differential



Limit min. temperature setpoint



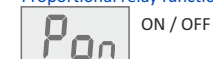
Sensor calibration



Anti-frost function

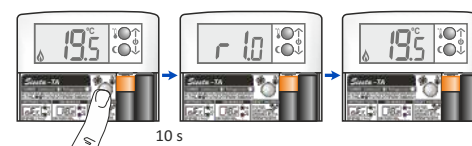


Proportional relay function



Reset

Press the button on the inside of the cover for 10 sec. to turn values of the parameters to the factory settings.



Siesta-TA ECO model

The ECO model does not have:

- Cooling mode control
- Differential: 0.5°C / 1.0°C
- Parameters: setpoint lock / probe calibration
- Anti-freeze not configurable, fixed at 5°C
- Reset