



MODERATO

Fitting instructions

MODERATO - TA Cód.: 29.043
MODERATO - TA RF Cód.: 29.044
MODERATO - RD Cód.: 29.045



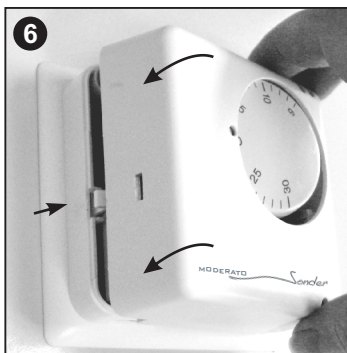
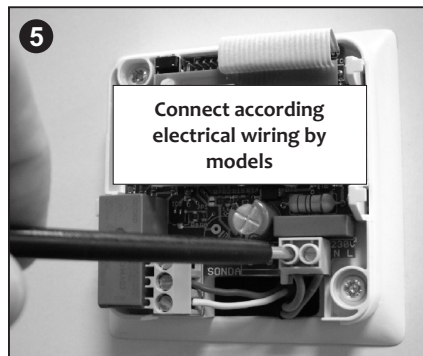
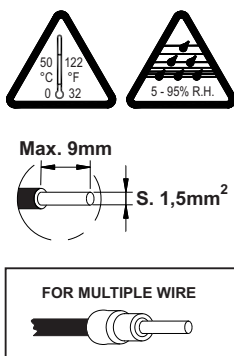
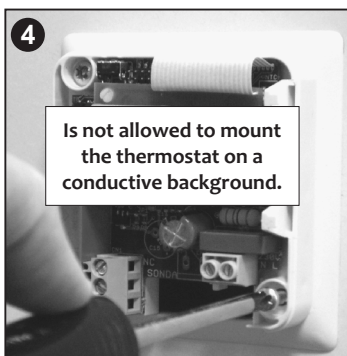
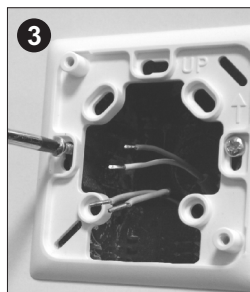
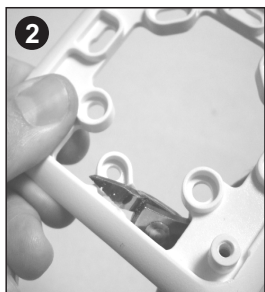
MODERATO - TA
Electronic thermostat to control the temperature of the room. Scale of 6 to 30°C



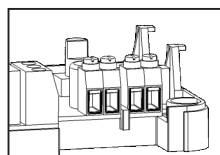
MODERATO - RD
Electronic thermostat to floor heating system
Room probe scale 6 to 30°C
Floor limit scale 20 to 35°C



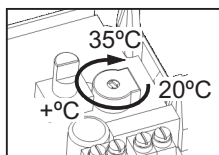
MODERATO - TA RF
It is an electronic thermostat to control the temperature of the room (scale 6 to 30°C) by radiofrequency



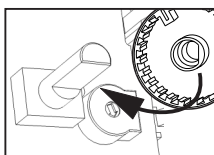
7 Settings for MODERATO - RD



Terminals for connections



Potentiometer setting for the limit of floor heating



Unique position between the axis of potentiometer and button

MODERATO

use instructions



OPERATING

MODERATO-TA It is an electronic thermostat to control the temperature of the room.

- Using the button you can select the temperature you want is the room (at 6 to 30 °C).
- It has a LED to indicate relay status (ON = relay activated).
- Before connecting the supply, to fix devices to wall.
- After connecting the power and the relay terminals on the device, close the cover as shown in picture No. 6.

MODERATO -TA RF It is an electronic thermostat to control the temperature of the room by radiofrequency.

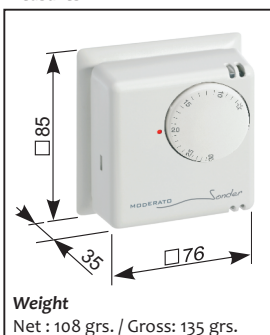
- Using the button you can select the temperature room (scale of 6 to 30°C).
- The issuer will send the state of the relay to the receiver and the order is forwarded to the receiver every 10 minutes.
- It has a LED to indicate relay status (ON = relay activated).
- Before connecting the supply, to fix devices to wall.
- Switch on the transmitter on and close the cover as shown in picture No. 6. The connection of the relay is in the receiver.

MODERATO-RD It is an electronic thermostat to control the temperature of a room with floor heating.

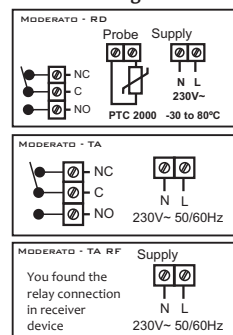
- Using the button you can select the temperature you want is the room (at 6 to 30 °C).
- To adjust the limit on the maximum temperature that can reach the floor, remove the cover and the button to select the value using the small potentiometer, range: 20 to 35°C (No. 7). If set the floor temperature below room temperature, the regulation is invalidated because the device cutting before heat up enough to reach the selected temperature.
- After adjusting the floor temperature replace the button on the shaft. Button and axis of potentiometer have a single position fit (see diagram No. 7).
- It has a LED to indicate the status of the probe and the relay (on relay = enabled / flashing = error probe). The probe may be wrong because their cables are cut, folded, are not right connected or sensor failure in reading.
- Before connecting the device, to fix the wall.
- After connecting the power and the relay terminals on the circuit, close the cover as shown in picture No. 6.

TECHNICAL DATA

Measures



Electrical wiring



Specifications

Control scale:..... 6° to 30°C.
Ambient temperature:..... Tmin. 0°C, Tmax. 40°.
Storage temperature:..... maximum 50°C.
Breaking power (Volt-free Contacts):..... 16(7)A 250V~.
Maximum cable size for connection relay:..... 2,5mm².
Power supply 230V~ -15% 50/60Hz.
Maximum cable size for connection supply:..... 1,5mm².
Contamination degree:..... 2.
Ingress Protection:..... IP20.
Software type A:..... (Action type 1.B).
Assigned pulse voltage:..... 2500 V.
MODERATO - TA RF:
Frequency signal:..... 868,3 Mhz.
Max. Distance Emitter - receiver:..... 80m m free field.
Repetition emitter-receiver signal:..... every 10 min.

GUARANTEE CONDITIONS

This appliance has a 3 years guarantee limited to replacement of defective parts. Ports not included.

We will not accept any responsibility for damage caused to the appliance by poor handling.

The guarantee does not include:

- Appliances with a damaged, effaced or altered series number.
- Appliances which have not been connected or used following the instructions that accompany it.
- Appliances which have been altered without the prior consent of the manufacturer.
- Appliances damaged by blows of liquid spills or gaseous emissions.

VERY IMPORTANT

It is installer's responsibility to fit electrical protection suitable for the installation (STANDARDIZED).

This appliance should be mounted on a universal recessed box.

Device designed for use in non-polluted environments.

Independently mounted control device for surface mounting and connection to fixed wiring.

We reserve the right to make modifications without prior notice.

Sonder Regulación, S.A.

Avda. La Llana, 93
08191 RUBÍ

(Barcelona) Spain

www.sonder.es

