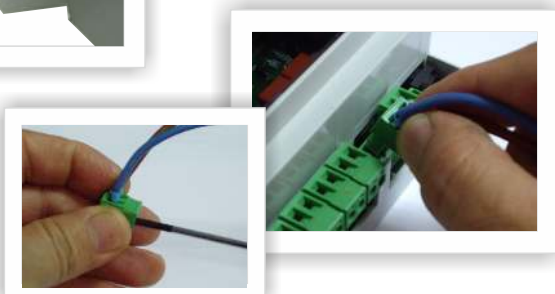


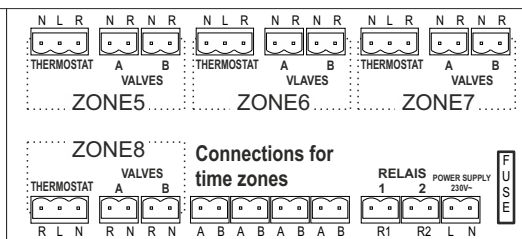
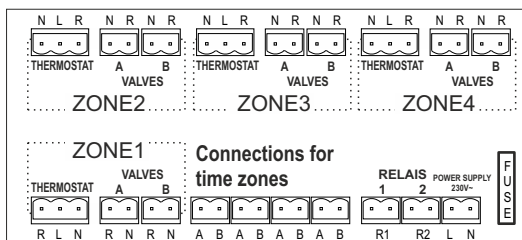
Rail-DIN Installation or Wall mounting



Plug-in strips



Protection fuse



GUARANTEE CONDITIONS

This device has a 3-year warranty, which is limited to the replacement of the defective part. Does not include shipping. We decline all responsibility for damaged equipment resulting from improper handling.

It is not included in the guarantee:

- Devices whose serial number has been damaged, erased or modified.
- Devices whose connection or use has not been carried out in accordance with the instructions enclosed with the device.
- Devices modified without prior agreement with the manufacturer.
- Devices whose deterioration is due to shocks or liquid or gaseous emissions.

See the rest of the general conditions on the website.

VERY IMPORTANT!

Before opening the box, to access the connections, be sure to disconnect the voltage.

This regulator is not a safety device, nor can it be used as such, it is the responsibility of the installer to incorporate adequate protection for each type of fixed piping.

Control device for independent surface mounting, and connection by means of fixed piping.

Subject to change without notice.

Sonder Regulación, S.A.
Avda. La Llana, 93
08191 RUBÍ
(Barcelona) Spain
www.sonder.es



Cod.:S965V3 INGBRC20

Control in rail format for 4 or 8 zones according to model, with installation by wiring and protection fuse. Automatically detects the start order from any thermostat and when all are in their comfort level the boiler pump stops for greater silence and savings.

Output relay: The unit has 2 potential-free output relays to carry out the "pump" start and stop manoeuvre on two different voltages. For example, the recirculating pump can be supplied at 230Vac, while the other relay activates a wall mounted boiler (24V).

Thermostat inputs: Can have 4 or 8 thermal zones, is compatible with both mechanical and battery powered thermostats or powered by 230Vac. For 24V version consult factory.

Outputs to Thermal Heads: Each thermal zone controlled by a thermostat can activate up to 2 thermal heads at the same time

System Advantages and Savings

- Activated zone indicator **LEDs**, for greater control and easier start-up or system fault detection.
- Zone 4 and Zone 8 controls are equipped with a **fuse** that protects the power supply to thermostats and heads. The power supply line, its current, once entered, is partly consumed in the electronics and partly directed to the line of each zone (Zone 1 L, Zone 2 L, Zone 3 L, ...). This line can be used directly, without time control or equipped with 1 or 2 optional clocks, not included, which generate one/two lines subject to start and stop time control (Time Zone A, Time Zone B).
- Savings compared to a classic installation that should have a chrono-thermostat in each room, with the cost that this represents, its initial programming and at each change of batteries, its setting twice a year with the time changes in Europe for savings. With this system, any thermostat can be easily, and therefore more economically, set to the time control function by simply connecting it to the respective Time Zone Line, either A or B, as desired by the user, without losing control of the different temperature settings in each room.

Examples of connections

Example 1
by zone with temperature control independent of the schedule.

When the thermostat is activated, connect the valve(s) associated with your area and activates the boiler and/or recirculation.

L - fused free line / N - neutral / R - signal from thermostat to valve

Non-Timed Thermostats Battery or Mechanical Powered
Scheme for both hot and cold or mechanical for cold.
For mechanical and heat generation connect R to NC

Mechanical or Battery Powered Timed Thermostats

Timed thermostats with power supply

Untimed Thermostats With Power

*** POWERED THERMOSTATS:** Jumper from the supply line to a relay contact, and the other relay contact is connected to the R of the zone wiring.