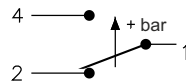


MINIATURE PRESSURE SWITCHES - XP110

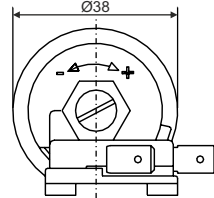
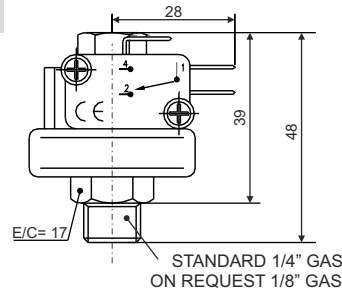
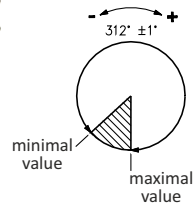
XP110 SERIE



Electrical Diagram



Angle Diagram



NOTE: In the case of appliances without a box, the metal parts must be insulated in accordance with the standard.

Technical Characteristics

- Body: brass
- Case: technopolymer (PPS)
- Stainless steel membrane: AISI 316 and spring: hardened steel
- Adjustment: screw
- Breaking capacity: SPDT 16(4)A 250V~
- Electrical connection: faston 6.3 x 0.8
- Room temperature: -20°C to +125°C
- Thermal drift: 0.04 bar every 10°C compared to +20°C)

Model	Code	Scale	Test pressure	Dif.	Conn. thread
XP110 0,2-1,2 bar	25.037	0,2 to 1,2bar	3 bar	0,20 bar	1/4" GAS
XP110 1,0-2,5 bar	25.038	1,0 to 2,5bar	4 bar	0,20 bar	1/4" GAS
XP110 1,5-4,0 bar	25.039	1,5 to 4,0bar	5 bar	0,20 bar	1/4" GAS
XP110 2,0-6,0 bar	25.045	2,0 to 6,0bar	8 bar	0,20 bar	1/4" GAS
XP110 4,0-9,0 bar	25.040	4,0 to 9,0bar	10 bar	0,35 bar	1/4" GAS
XP110 1,0-2,5 bar 1/8"	25.066	1,0 to 2,5bar	4 bar	0,20 bar	1/8" GAS

Guarantee Conditions

This appliance has a three-years guarantee limited to replacement of defective parts. Transports not included.

We will not accept any responsibility for damage caused to the appliance by poor handling.

The guarantee does not include:

Appliances with a damaged, effaced or altered series number.

Appliances which have not been connected or used following the instructions that accompany it.

Appliances which have been altered without the prior consent of the manufacturer.

Appliances damaged by blows of liquid spills or gaseous emissions.

For the rest of general conditions visit our web.

Very Important

Before opening the box, to access the connections, be sure to turn off the power. Failure to do so may cause electric shock and death.

This switch is not a safety device, or can be used as such, it's the installer responsibility incorporate adequate protection to every type of installation (**homologated**). Installation, handling and repair of this appliance must only be carried out by qualified personnel.

Reserved the right of modify without prior notice.

Sonder Regulación, S.A.

Avda. La Llana, 93

08191 RUBÍ

(Barcelona) Spain

www.sonder.es



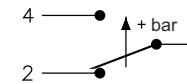
Code: 9107 ING Vg-1MAY20

MINIATURE PRESSURE SWITCHES - XP110

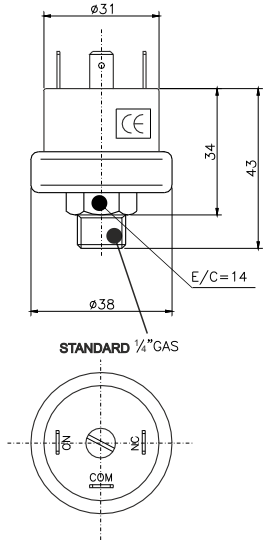
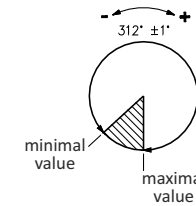
XP600 SERIE



Electrical Diagram



Angle Diagram



Models with 1/8" GAS thread on request

Technical Characteristics

- Body: brass
- Housing: technopolymer PBT
- Membrane: Stainless steel. AISI 316
- Repeatability: ±0.05 bar
- Breaking capacity: SPDT 10(2)A 250V~
- Working temperature: -20°C to +85°C
- Thermal drift: +0.04 bar every 10°C compared to +20°C
- Contacts can be protected with optional caps (see accessories)

Model	Code	Scale	Test pressure	Dif.	Conn. thread
XP600 0,2-1,2 bar	25.041	0,2 to 1,2bar	4 bar	0,30 bar	1/4" GAS
XP600 1,0-2,5 bar	25.051	1,0 to 2,5bar	4 bar	0,30 bar	1/4" GAS
XP600 1,5-4,0 bar	25.052	1,5 to 4,0bar	5 bar	0,30 bar	1/4" GAS
XP600 2,0-6,0 bar	25.054	2,0 to 6,0bar	8 bar	0,35 bar	1/4" GAS
XP600 2,0-6,0 bar 1/8"	25.049	2,0 to 6,0bar	8 bar	0,35 bar	1/8" GAS

NOTE: In the case of appliances without a box, the metal parts must be insulated in accordance with the standard

Accessories for XP600

CAPUCHÓN (HOOD)

- Covers fastons
- Code: 2.362



CAPUCHÓN CABLEADO ENCHUFABLE (PLUG-IN WIRING HOOD)

- Covers fastons
- Three-wire output
- Code: 5.224

