



Applications on commercial cooling installations and equipment, display cases, bottle cupboards, water coolers, etc.

Operate by liquid expansion, wide ranges, low influence of the box temperature respect the sensor bulb.

Measures: 65 x 90 x 50 mm

Capillary and bulb in stainless steel

Button with two stops for limits

IP50

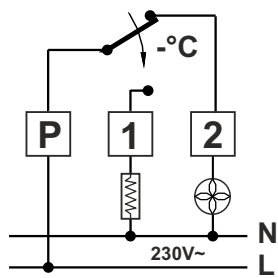
Scale for ATA 01S: from -20°C to +40°C

Scale for ATA 02S: from +2°C to +50°C

Differential: 1,5°C

Specifications: Spiral capillary in stainless steel

**Electric Diagram**

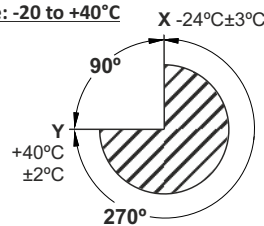


Contacts without power supply

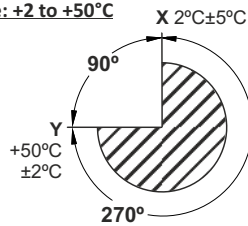
**Temperature Diagram**

according regulation range

Scale: -20 to +40°C



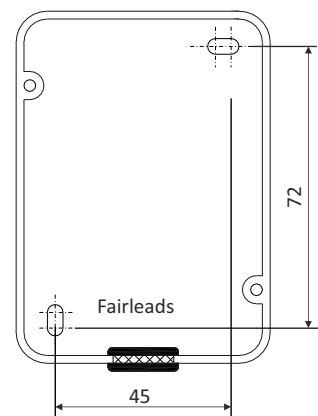
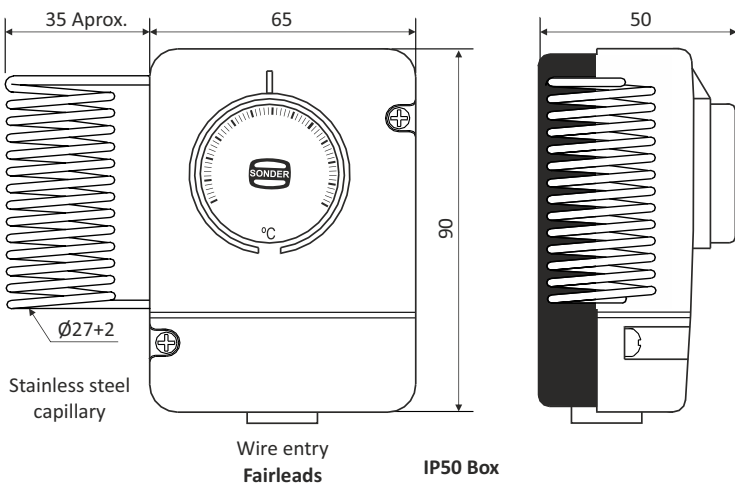
Scale: +2 to +50°C



**Specifications**

- Connection difference approximately **1,5°C ± 1°C**
- Maximum body temperature **50°C**
- Breaking power **16A/400V~**
- Temperatures are measured introducing the phial and 80/100 mm capillary in the bath at ambient temperature of **23±3°C**
- The indicated temperatures are disconnection values **P-2**
- Faston 6,3X0,8 DIN 46244
- Specification: Stainless steel capillary in spiral
- Optional accessory ref. 3.907 Grapa for mounting in Rail-Din

**Measures mm**



Installation

**Guarantee Conditions**

This appliance has a three-years guarantee limited to replacement of defective parts. Transports not included.

We will not accept any responsibility for damage caused to the appliance by poor handling.

The guarantee does not include:

- Appliances with a damaged, effaced or altered series number.
- Appliances which have not been connected or used following the instructions that accompany it.
- Appliances which have been altered without the prior consent of the manufacturer.
- Appliances damaged by blows of liquid spills or gaseous emissions.

For the rest of general conditions visit our web.

**Very Important**

Before opening the box, to access the connections, be sure to turn off the power. Failure to do so may cause electric shock and death.

This switch is not a safety device, or can be used as such, it's the installer responsibility incorporate adequate protection to every type of installation (**homologated**). Installation, handling and repair of this appliance must only be carried out by qualified personnel.

Reserved the right of modify without prior notice.

**Sonder Regulación, S.A.**

Avda. La Llana, 93

08191 RUBÍ

(Barcelona) Spain

[www.sonder.es](http://www.sonder.es)

