



The range of Low Differential Pressure switches are used in air conditioning, parking stairs,...etc., systems to measure fan status and filter conditions.

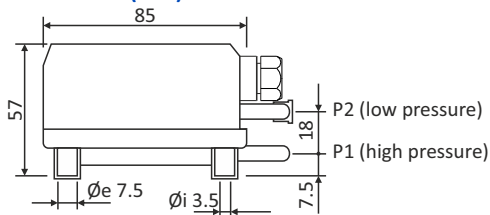
The Pressure Switches measures pressure medium, air and non-inflammable, non-aggressive gases and include an adjustment knob marked in pascals to indicate the pressure range.

With the visible set point pressure switches are manually adjustable, do not require a pressure gauge to set them, and include a 1,5 metre long tube and pipe fixing kit. Must be mounted vertically (diaphragm in vertical position).

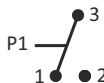
Datos Técnicos

- Scale: **0.3 to 3 mbar**
- Differential **0.1 mbar**
- Safety Polycarbonate sealed enclosure **IP54**
- 2 conduit entries for **6 mm** tube
- Electrical connection via Faston female of **6.3 mm** with screw including
- Cable gland **PG9** (with seal).
- Maximum working pressure: **100mbar**
- Working temperature: **-20 to +85°C**
- Maximum temperature ambient: **85°C**
- Switched Contacts: **1.5A (0.4) 250V ~**
- Weight net (gross): **203 (256) g**

Connections (mm)

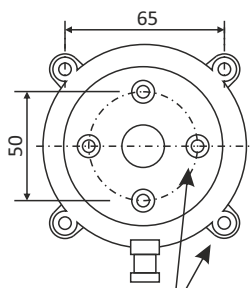
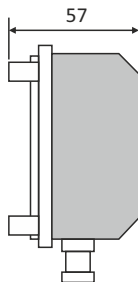
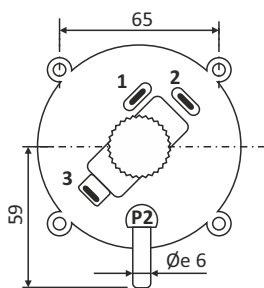


Electrical Contacts



1	Normally closed	NC
2	Normally open	NO
3	Common terminal	C

Installation Measures mm



Use the necessary fixings

Guarantee Conditions

This appliance has a two-years guarantee limited to replacement of defective parts. Transports not included.

We will not accept any responsibility for damage caused to the appliance by poor handling.

The guarantee does not include:

Appliances with a damaged, effaced or altered series number.

Appliances which have not been connected or used following the instructions that accompany it.

Appliances which have been altered without the prior consent of the manufacturer.

Appliances damaged by blows of liquid spills or gaseous emissions.

For the rest of general conditions visit our web.

Very Important

Before opening the box, to access the connections, be sure to turn off the power. Failure to do so may cause electric shock and death.

This switch is not a safety device, or can be used as such, it's the installer responsibility incorporate adequate protection to every type of installation (**homologated**). Installation, handling and repair of this appliance must only be carried out by qualified personnel.

Reserved the right of modify without prior notice.

Sonder Regulación, S.A.

Avda. La Llana, 93
08191 RUBÍ
(Barcelona) Spain
www.sonder.es

