

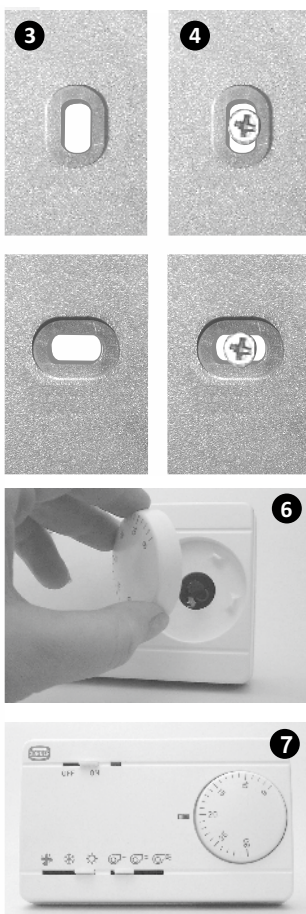
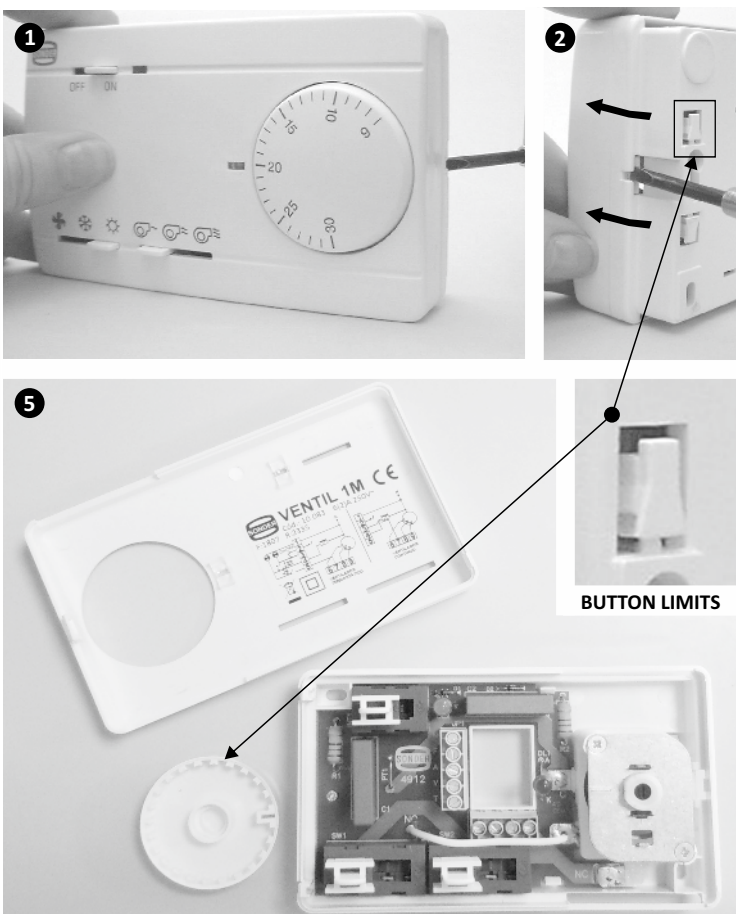


Ventil 1M

Code: 10.083

Air conditioning Thermostats for FAN-COIL & Heat Pump

Instructions for installation



Guarantee conditions

This appliance has a three-years guarantee limited to replacement of defective parts. Transport not included.

We will not accept any responsibility for damage caused to the appliance by poor handling.

The guarantee does not include:

Appliances with a damaged, effaced or altered series number.

Appliances which have not been connected or used following the instructions that accompany it.

Appliances which have been altered without the prior consent of the manufacturer.

Appliances damaged by blows or liquid spills or gaseous emissions.

For the rest of general conditions visit our web.

VERY IMPORTANT:

This appliance should be mounted on a universal embedded box.

Device designed for a clean pollution situation.

This control is not a safety device and should not be used as such, is the responsibility to incorporate appropriate protection for each type of facility (homologated) installer.

Independent control device mounting, and connection via fixed pipeline.

We reserve the right of modify without prior notice.

Sonder Regulación, S.A.

Avda. La Llana, 93

08191 RUBÍ

(Barcelona) Spain

www.sonder.es



Cód. 4396 INC.V5/UJ18



Ventil 1M

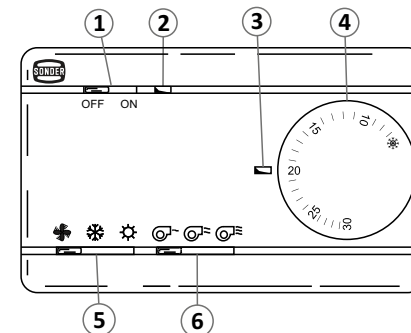
Code: 10.083

Air conditioning Thermostats for FAN-COIL & Heat Pump

Instructions for use

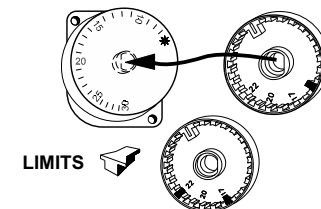
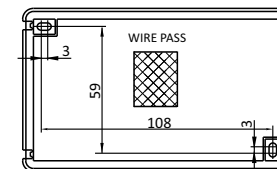
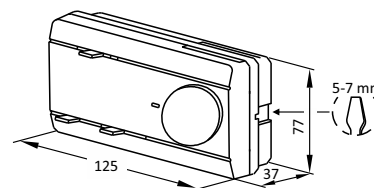
Operation characteristics

- 1- ON/OFF switch.
- 2- Operation indicator light.
- 3- Cool / Heat indicator light.
- 4- Temperature selector.
- 5- Cold/Hot/Ventilation switch*
- 6- Fan speed selector.



* Can be connected with continuous speed ventilation independently to selector No. 5. (See section of Operation and electrical connection).

Installation and measures of device



- Open the cover by pressing gently with a screwdriver in the opening on the right side of the base.
- Fix the base to the wall.
- Make the electrical connection
- Place the temperature selector button on the shaft, it only has one location position. If you wish to limit the regulation scale, you can place, as the image indicates, the two stops that come in the base.
- Close the cover and connect the control to the electric current.

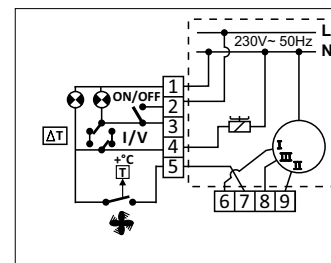
Operation and Electrical connection

Continuous operation fan

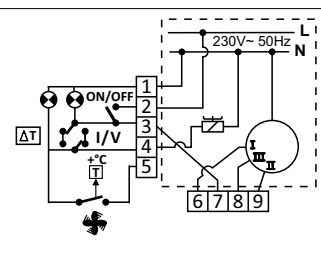
Generates cold in cyclical operation (thermostatic)

Generates hot in cyclical operation (thermostatic)

Thermostatic Fan



Continuous Fan



In the case of needing to always work in continuous operation, make the connections indicated in the electrical diagram.

Technical data

Power supply: 230V~ 50Hz
 Regulation scale: +6°C a +30°C
 Differential: 1.5K ±0.5°C
 Gradient: 4°C/h

Breakage power (contactos): 6(2)A 250Vac
 Degree contamination: 2
 Action type According EN 60730: 1.B.

IP20 T50

